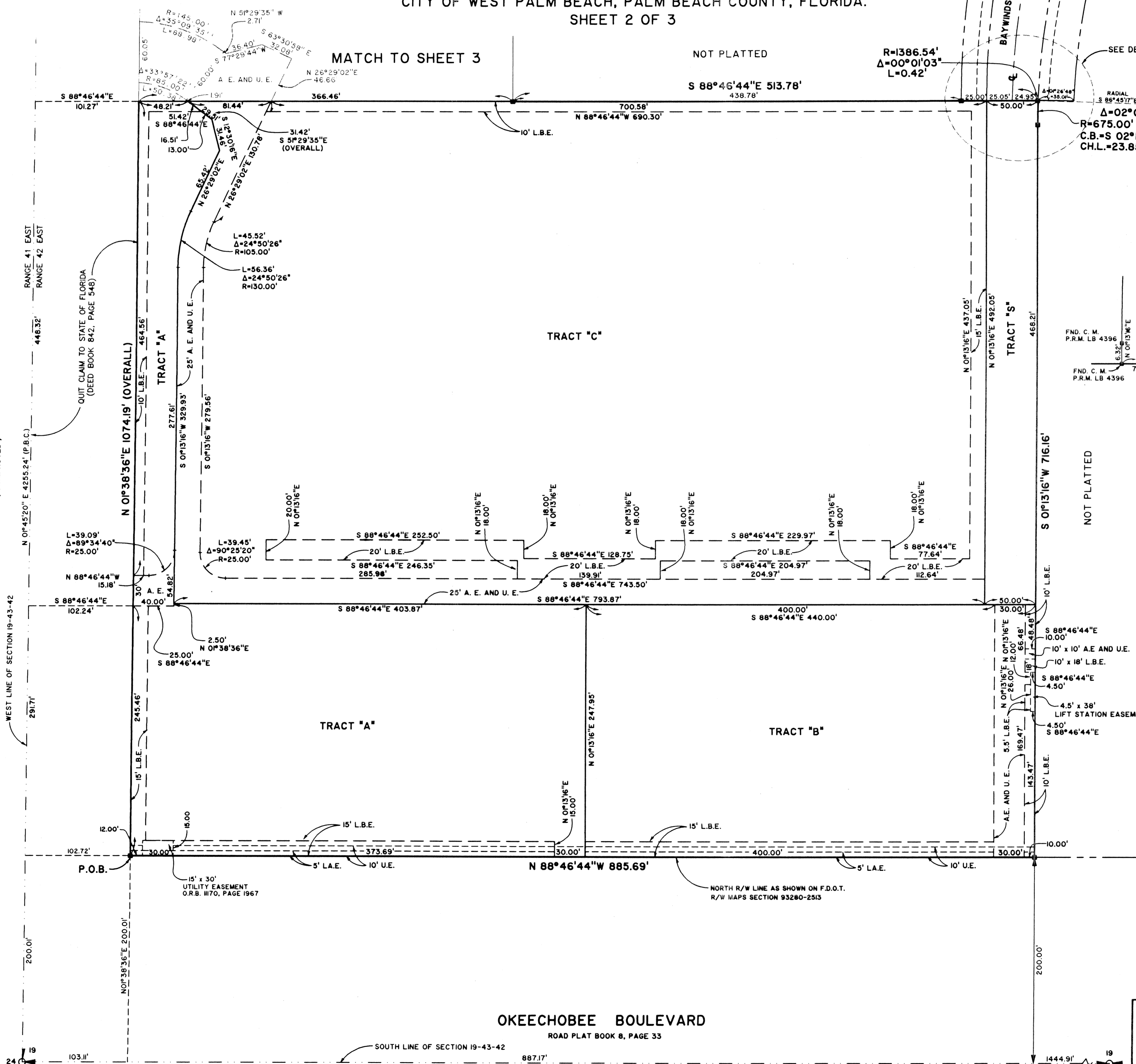


BAYWINDS COMMERCIAL R.P.D. PLAT NO. 9

BEING A PORTION OF SECTION 19, TOWNSHIP 43 SOUTH, RANGE 42 EAST,
CITY OF WEST PALM BEACH, PALM BEACH COUNTY, FLORIDA.

SHEET 2 OF 3

STATE ROAD NO. 7 (U.S. 441)
ROAD PLAT BOOK 1, PAGE 55
(UNIMPROVED)



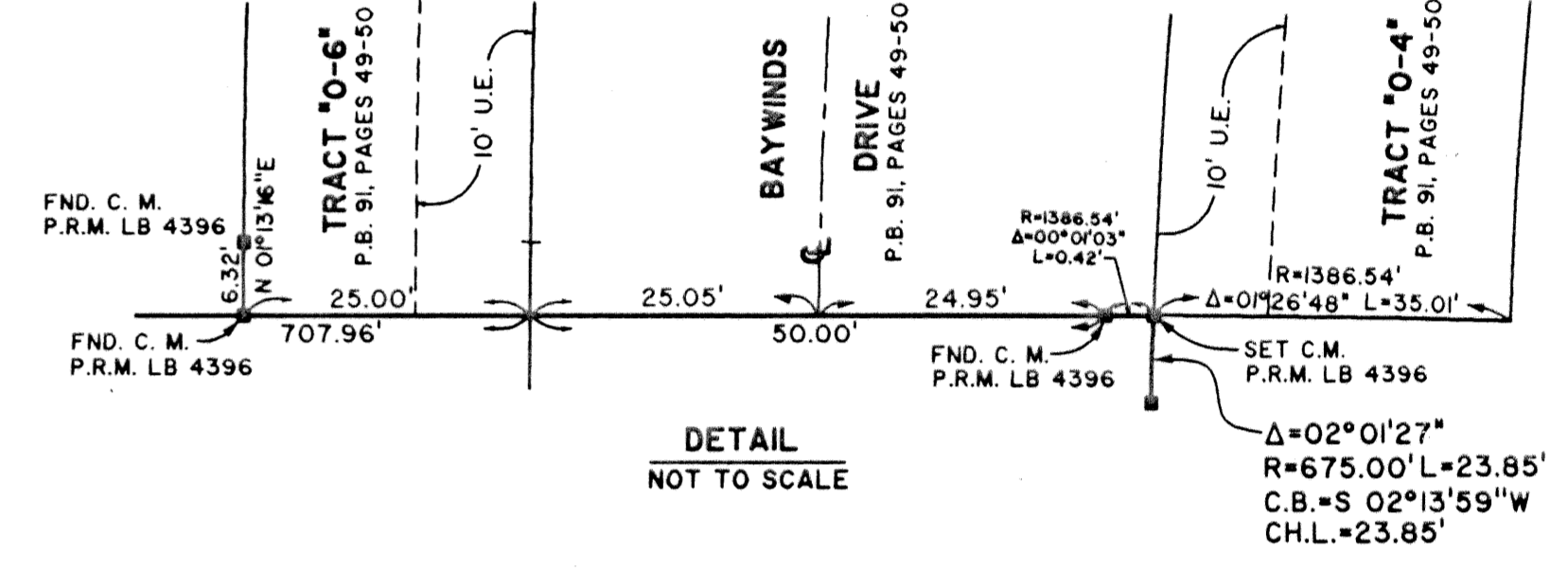
NOT PLATTED

R=1386.54'
Δ=0°0'03"
L=0.42'

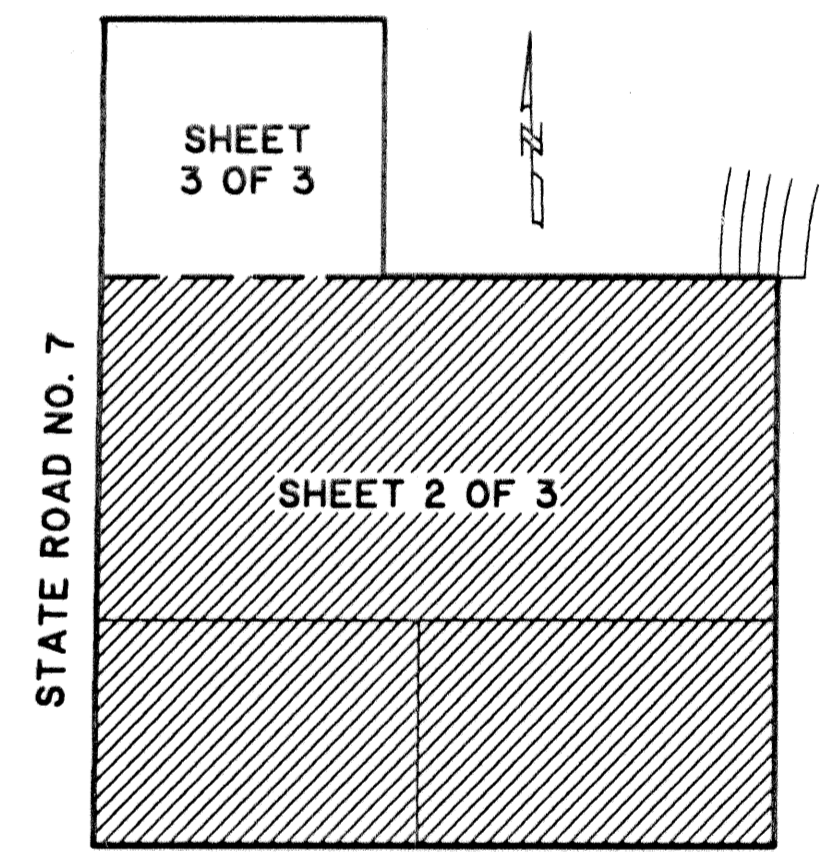
SEE DETAIL

STATE OF FLORIDA SS
 COUNTY OF PALM BEACH
 THIS PLAT WAS FILED FOR RECORD AT _____
 ON _____ M. THIS _____ DAY OF _____ 2002
 AND DULY RECORDED IN PLAT BOOK NO. _____
 ON PAGE _____
 DOROTHY H. WILKEN,
 CLERK OF THE CIRCUIT COURT
 BY _____ D.C.

BAYWINDS R.P.D. PLAT NO. 6
P.B. 91, PAGES 49 - 50

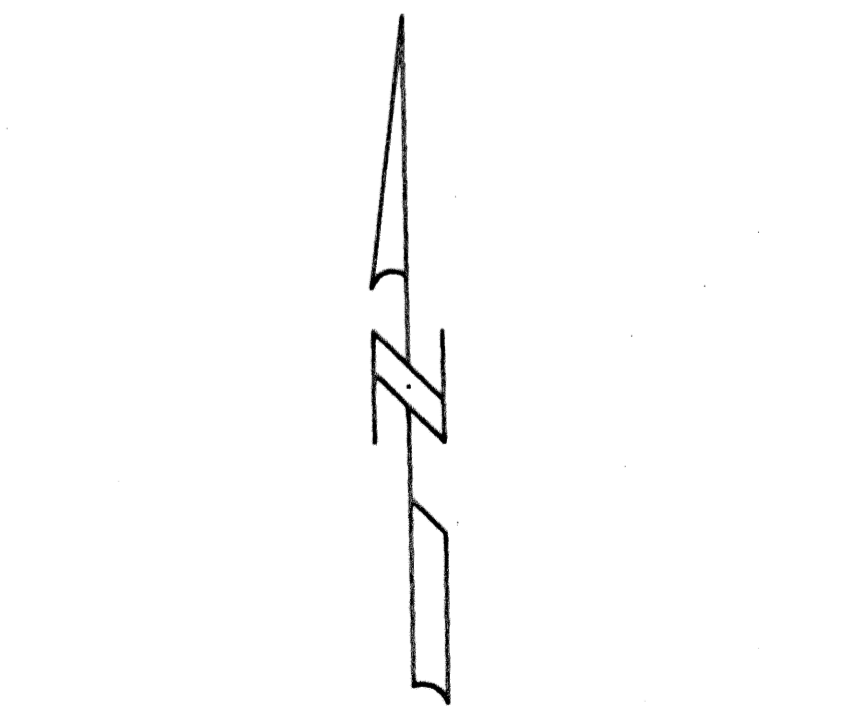


DETAIL
NOT TO SCALE



OKEECHOBEE BOULEVARD

KEY MAP
NOT TO SCALE



Scale 1" = 50'

OKEECHOBEE BOULEVARD
ROAD PLAT BOOK 8, PAGE 33

P.O.C.
SW CORNER OF SECTION 19
TOWNSHIP 43 S., RANGE 42 E.

S 1/4 CORNER OF SECTION 19
TOWNSHIP 43 S., RANGE 42 E.
FND. P.B.C. BRASS DISK IN C.M.

Landmark Surveying & Mapping Inc.
 1850 Forest Hill Boulevard
 Ph. (561) 433-5405 Suite 100 W.P.B. Florida
 LB # 4396

BAYWINDS COMMERCIAL R.P.D. PLAT NO. 9